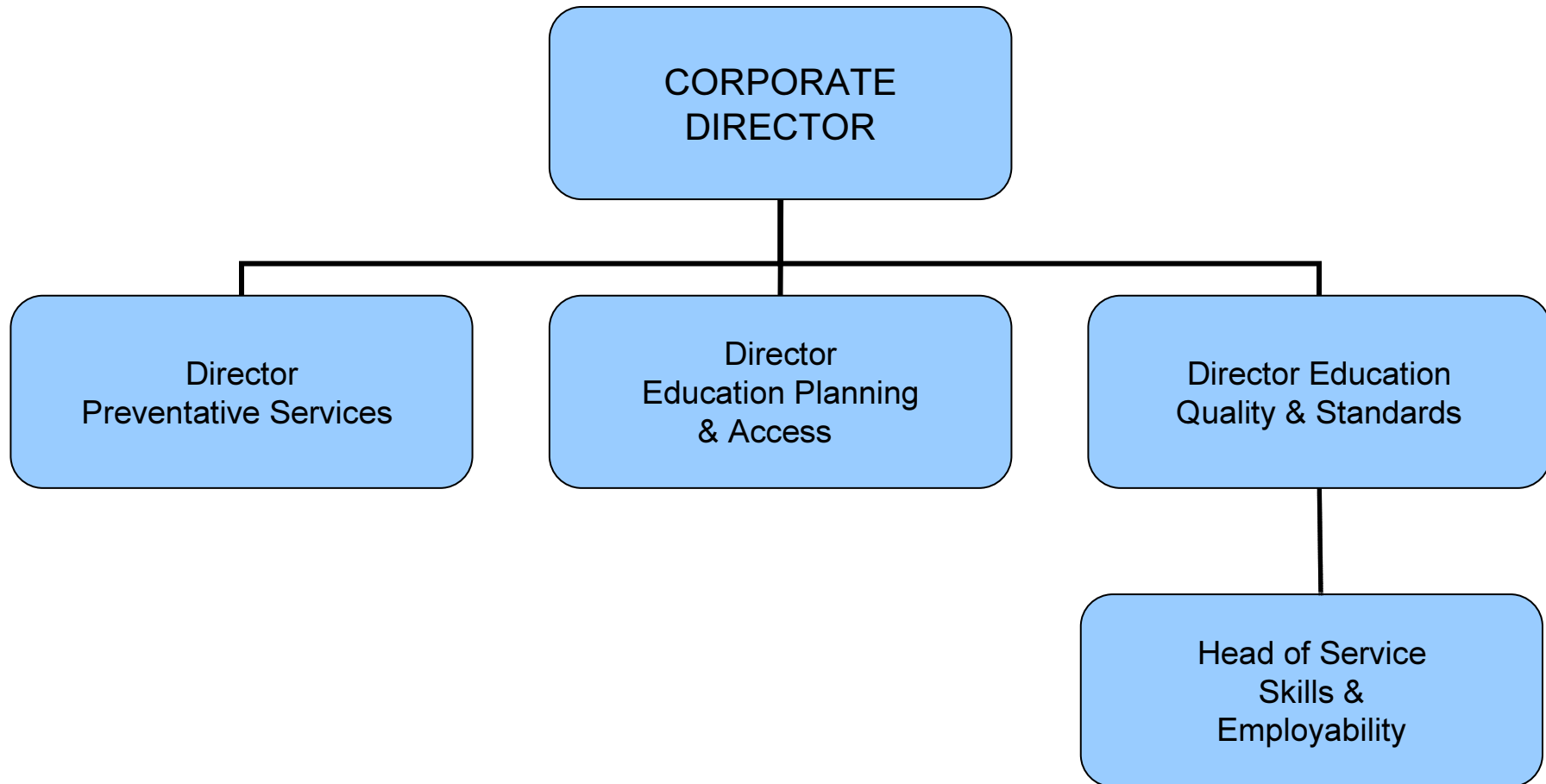


EDUCATION & YOUNG PEOPLE SERVICES



| Education & Young People Services | |
|---|--|
| Director Preventative Services | <ul style="list-style-type: none"> •Inclusion and Attendance (NB Elective Home Education to Specialist Services) •Integrated Youth Services (NB part of Youth Justice may sit within People: Statutory Children's Services) •SCS Assessment and Intervention teams (split between statutory and prevention)** •SCS Family Support Teams (split between statutory and prevention)** •SCS Adolescent teams (split between statutory and prevention)** •Children's Centres •Commissioned services for early intervention and prevention <p>** information regarding the case split between statutory and early intervention and prevention is still being established.</p> |
| Director Education Planning & Access | <ul style="list-style-type: none"> •Fair Access (no change) •Educational Psychology (no change) •Provision Planning (no change) •Academy Conversion Team (no change) •SEN Assessment & Placement |
| Director Education Quality & Standards | <ul style="list-style-type: none"> •School Standards and Improvement (no change) •Early Years and Childcare (no change) •Skills and Employability (includes part of Business Engagement and Economic Development Team and Kent Supported Employment) •Advocacy (NB. Portage to SEN Assessment and Placement and Young Parents Coordination to Preventative Services for Children & Young People) •Virtual School Kent |